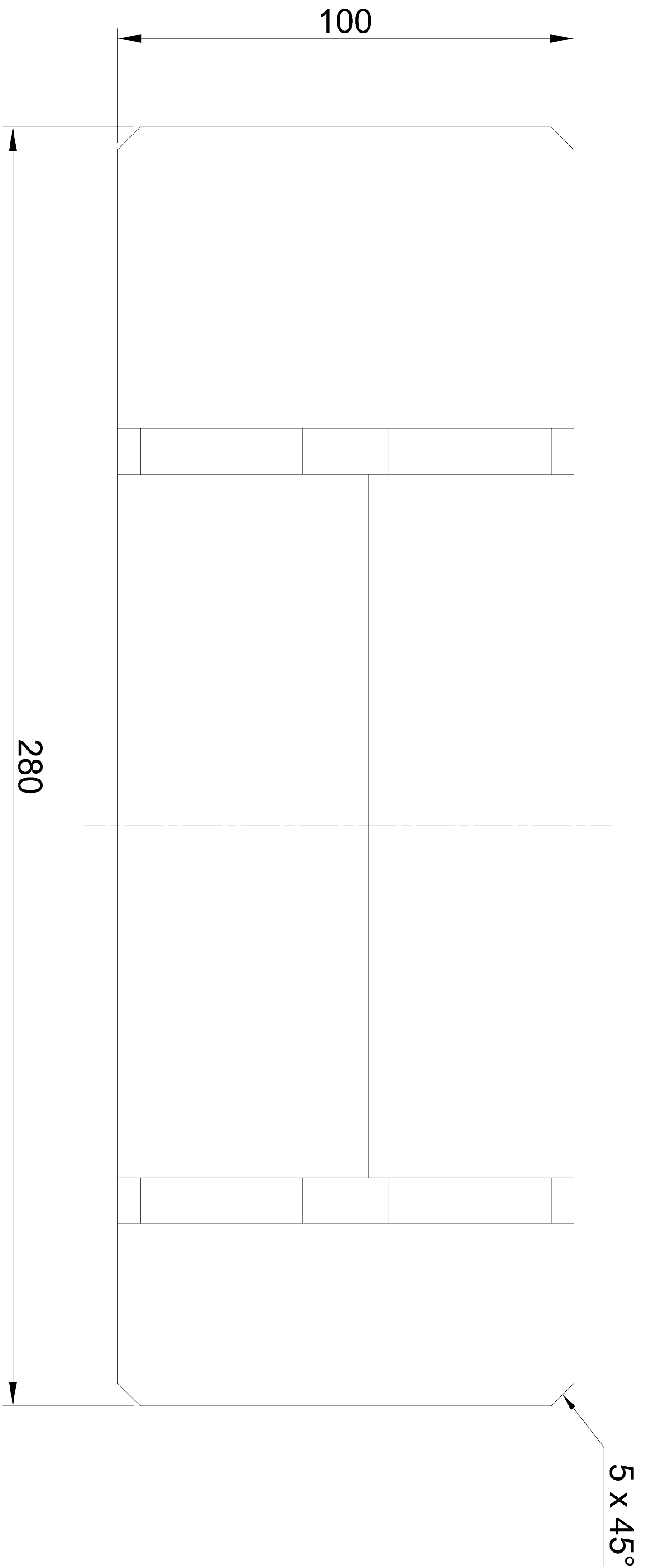
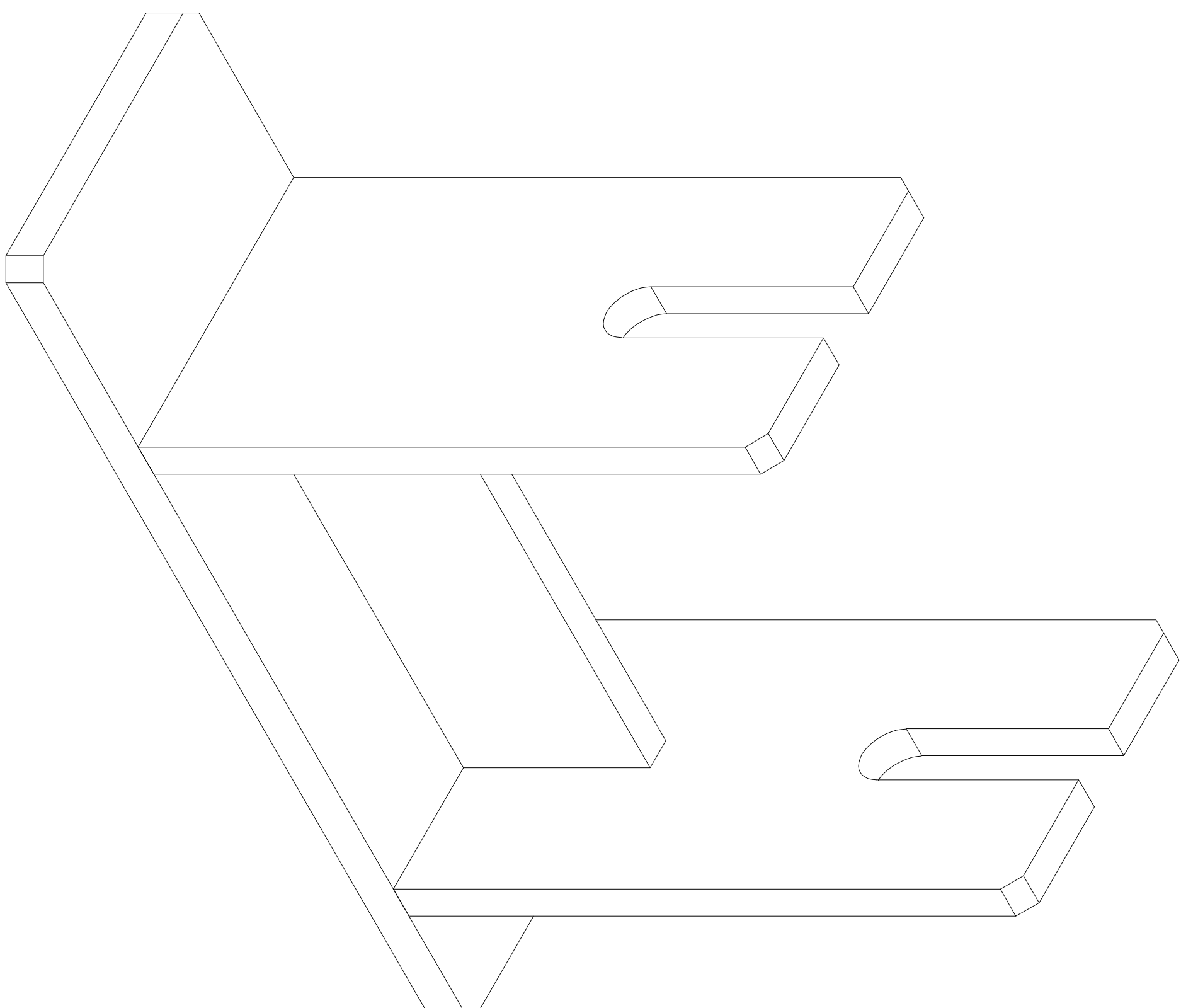
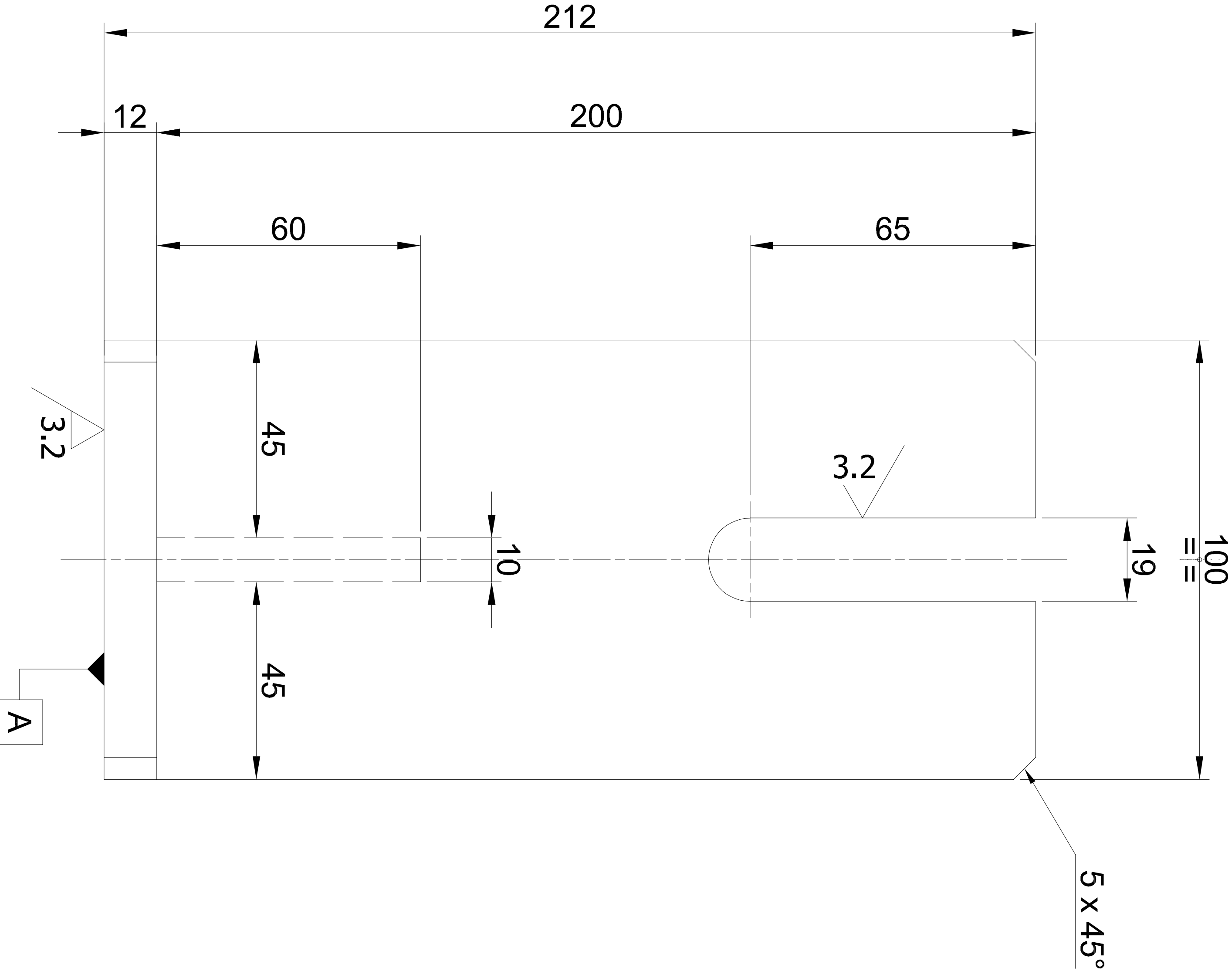
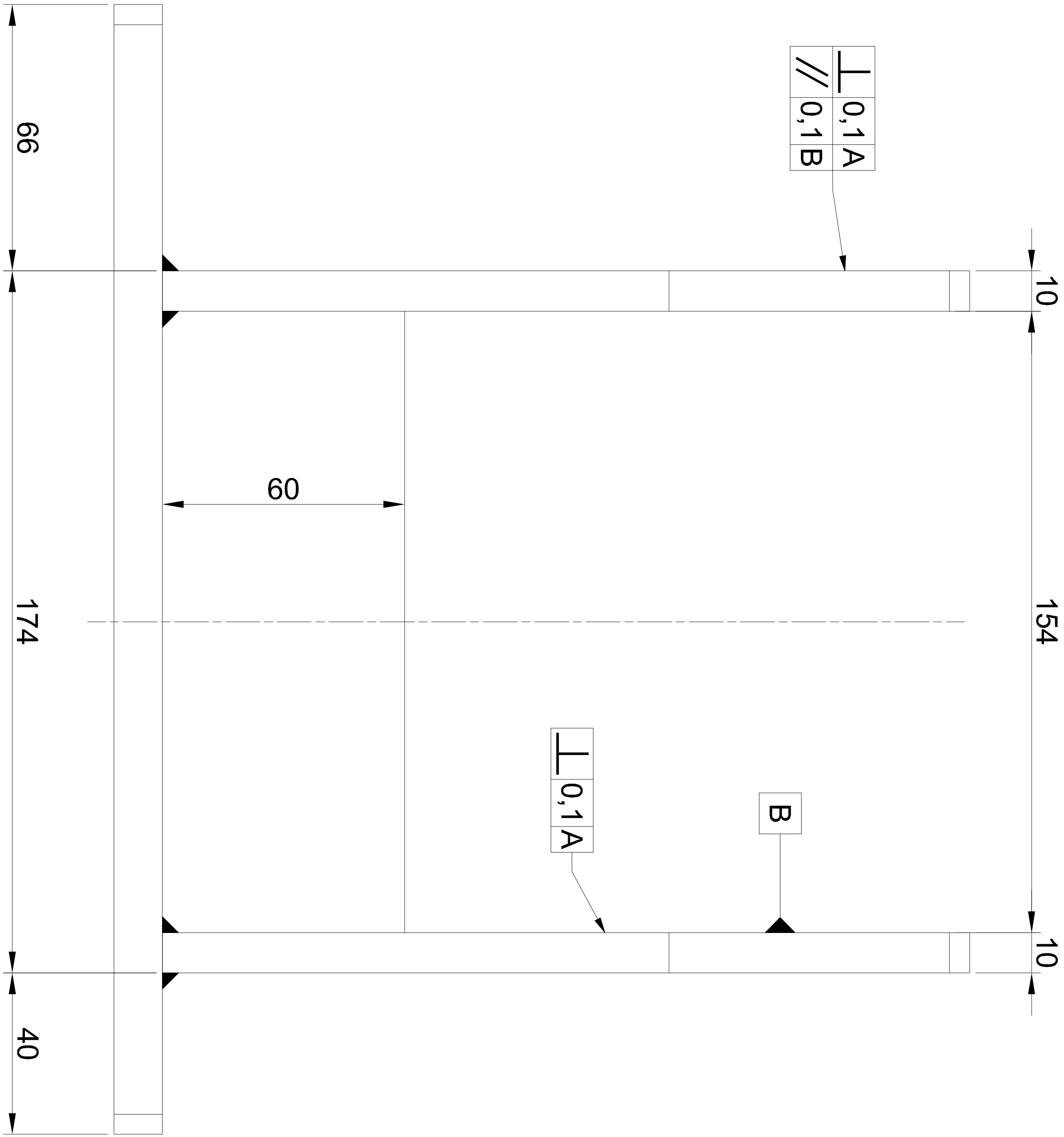
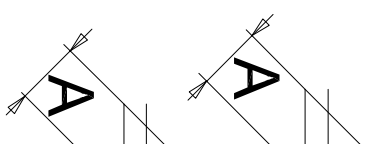


GENERAL MACHINING TOLERANCE - GRADE MEDIUM (UNI EN ISO 22768)										REMOVE SHARP EDGES TOGLIERE SPIGOLI VIVI		
TOLLERANZA GENERALE DI LAVORAZIONE - GRADO MEDIO (UNI EN ISO 22768)										Chamfer Smusso		
Size	above	Gruppo di		oltre	-	6	30	120	400	1000	2000	4000
	up to	dimensioni		fino a		6	30	120	400	1000	2000	4000
Tolerance	Scostamenti		±0.1	±0.2	±0.3	±0.5	±0.8	±1.2	±2	±3		



NORME GENERALI DI SALDATURA

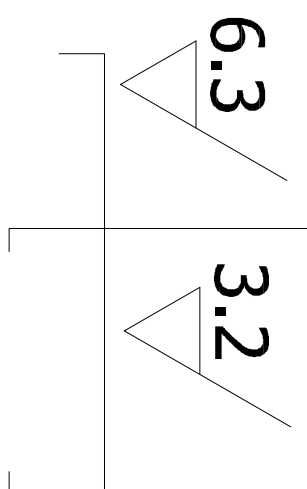
PREPARAZIONE DEI LEMBI SECONDO "DIN 1912"
EDGE PREPARATION FOR WELDING ACCORDING TO
DOVE NON ALTRIMENTI INDICATO - A = 0,7
DELLO SPESORE MINIMO DA COLLEGARE
WHERE NOT SPECIFIED - A = 0.7
OF THE MINIMUM THICKNESS TO BE JOINT



19/02/2025		Q.TA'	
DIS. ASSIEME	COMMESSA N.	DATA	Descrizione:
		S.P.	R.V.
		Verificato	AutORIZZATO
		Disegno N.	Scala: 1 : 1.5
		60-19-31A-143	Revisione: 0
		Foglio: 1 di 1	Massa
		A termine di legge e' rigorosamente vietato riprodurre o comunicare a terzi il contenuto del presente disegno	A2

Squadra sostegno canale

(Channel support team)



HIGH TEMPERATURE PAINTING REGULATIONS (600°C)
Paint the untreated surfaces as follows:
- 1 coat of TWO-COMPONENT INORGANIC ZINC FOR HIGH TEMPERATURES (450°C) TYPE ZINCOSIL (CO.VER.LAC.), 75µm thick.
- 1 or more coats of SILICONE PAINT FOR HIGH TEMPERATURES (600°C) TYPE HTA600 (CO.VER.LAC.), 60µm thick.
The final coat thickness will therefore be no less than 135µm.